

# AUTHENTIC FLORIDA KEYSTONE

Authentic Florida Keystone by Coral Classics



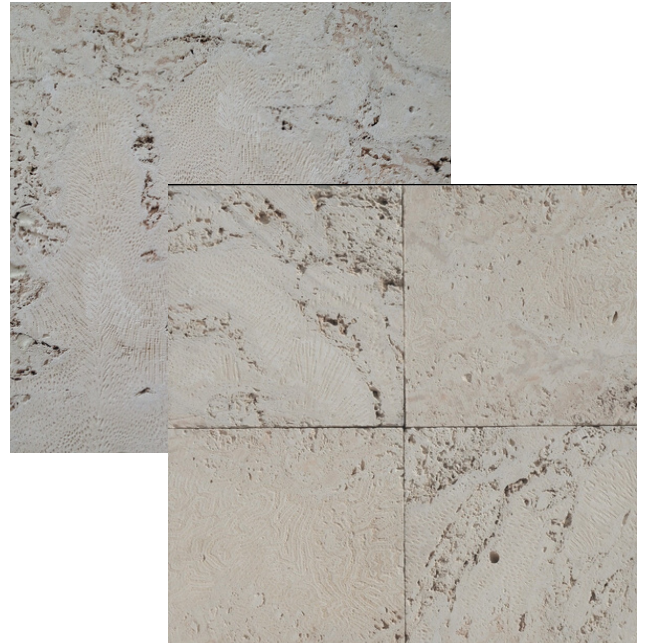
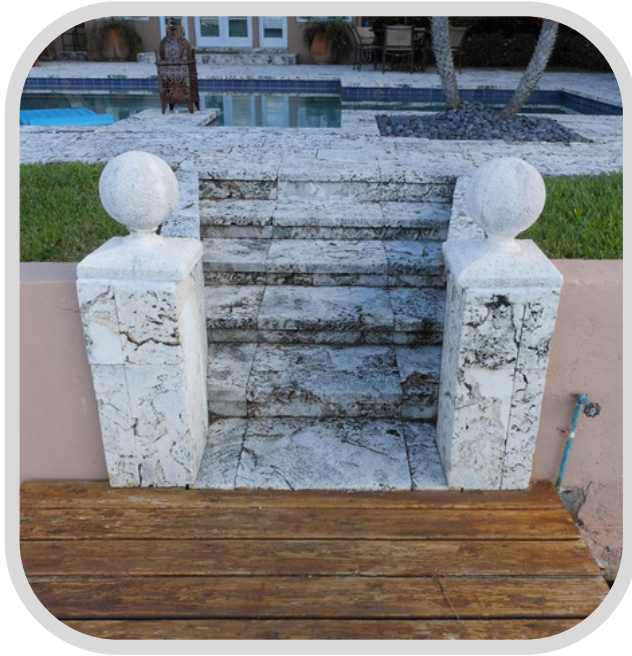
Cut from areas that are under construction in the Florida Keys, it is swirled with large amounts of brain and fan corals. It is a very white material and is consistent in color from piece to piece, having many large and small holes throughout. Hues of Red and Brown colors are sometimes seen in this material as well as tree roots.

Authentic Florida keystone is a very rustic looking material and can be cut into tiles, pavers, copings, treads, architectural items, and small slabs. Material is available in 1" and 2" thickness depending on size, irregular flagging, and rough-face finish. Being a true coral stone, it retains no heat regardless of the sun's exposure it endures and is always cool to the touch and naturally non slip.

For mud set over concrete slab as well as pavers for standard residential sand set applications.



# TILE FORMAT



## TILE SIZES

12"X12"X1"  
12"X24"X1"  
16"X16"X1"  
18"X18"x1"  
1" Keystone Pattern  
Saw Cut / Unfilled

## PAVERS

12"X12"X2"  
12"X24"X2"  
16"X16"X2"  
18"X18"X2"  
18"X36"X2"  
24"X24"X2"  
24"x36"x2"  
24"X48"X2"  
36"x36"x2"  
2" Pattern  
Saw Cut / Unfilled

## COPING & SLABS

**COPING**  
12"X24"X2"  
Full Bullnose  
or  
Square Edge  
Saw Cut / Unfilled

**SLABS**  
2" Cut to Size  
2" Raw Slabs  
36"x48 Max Size

- 1" & 2" Keystone Pattern
- 1" & 2" Flagging
- Roughface / Splitface

- The most common application is to install this material in a natural saw cut unfilled finish, and then let the material "Patina" from being exposed to the weather.
- As a result of this process, the material will go through stages of green and black and eventually stain itself black in the holes and achieve the "Castle Look" making it appear to be thousands of years old.



# ARCHITECTURAL PRODUCTS



Authentic Florida Keystone can be fabricated into fireplaces, columns, door surrounds, and other custom architectural designs.

## SEALING

Due to the porosity of Authentic Florida Keystone, the material is difficult to be sealed and keep clean when used in a exterior application. Over time, the stone will "Patina", go through color changes from being exposed to natural elements, eventually develop the "old world castle" look, as seen all over South Florida, South Beach, Fisher Island.